

User's Guide



What's in the Box?

- Lid with Motor Assembly
- Power Supply
- Twin Blade Wiper
- 4 Thumb Screws



Safety

- The socket for the transformer and timer must be located away from moisture or water.
- When making adjustment or cleaning the unit, make sure the transformer was removed from the power source.
- Be careful not to drop the cleaner into water, the motor is not water proof.

Technical Data

Voltage: 110V / 12V
 Power consumption: ≤ 15 Watt
 Life time: 1500h (for motor)

WARRANTY

-Reef Octopus acrylic products come with a ONE (1) YEAR Limited Warranty from the date of the retail purchase by the original end-user.

-If a material or workmanship defect arises and a valid claim is received within the Warranty Period, Reef Octopus will replace the case only.

-Reef Octopus cannot be held liable for damages to personal property due to misuse or improper care and maintenance of case and o-ring seals.

-Reef Octopus warranty does not, under any circumstance; cover the replacement or cost of any electronic device or personal property inside or outside of the case.

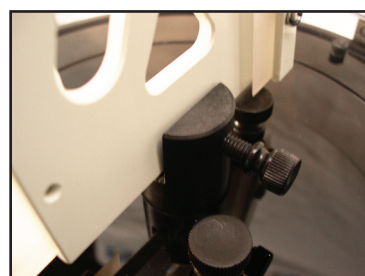
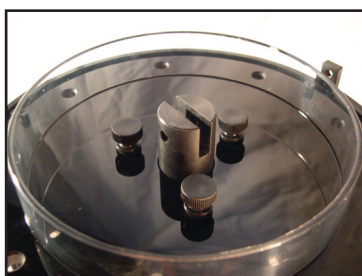
- *Do not run ANC in a dry neck**
- *Do not submerge motor under water**
- *Not intended to be used with ozone**

Description

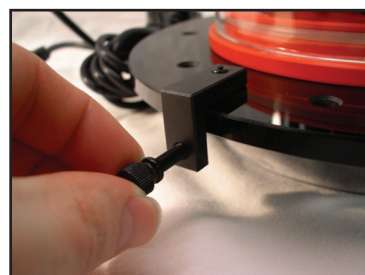
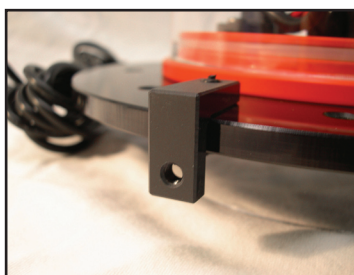
Octopus motorized (ANC) Automated Neck Cleaner helps keeps your octopus protein skimmer running at peak performance by periodically wiping the inside of the neck where all the bio-organics usually would accumulate. This great skimmer accessory not only keeps you skimmer running at peak efficiency but save the timely chore of keeping your skimmers neck clean. As you know, build up in the neck causes foam to stick to the sides and restricting the collection of skimmate within the skimmers cup.

ANC Assembly

Take the ANC unit and flip it so that the motor unit is facing away from you. Take the twin wiper blade and place it into its cradle and secure it in with the longer thumb screw. (Be sure that you insert the screw into the side without the threads so it slips in and then threads from the other side.) Please do not over tighten.



Take the ANC unit and Position the lid over the clean(ed) skimmer cup. Carefully screw in the three shorter thumb screws into the stabilizer blocks mounted on the rim of the lid. Screw them in until the tips of the screws are just touching the cups surface. Please do not overtighten the screws.



Place the cup and ANC lid onto the skimmer and plug the power supply to the controller/timer of choice. We suggest a rotation of approximately 15 seconds every 4-6 hours depending on your build up.



Maintenance The ANC should be clean at last once a month.

To clean the cleaner:

1. Loosen the 3 screws on the stabilizer blocks.
2. Remove the cleaner off of collection cup and unscrew the mounting screw holding the twin wiper blade for easy cleaning of the wiper blade.
3. Using a wet rag to clean the organic build up on the lid.
4. Re assemble the ANC according to the steps above.

Code for Neptune Apex Controller

Neptune Apex Code for Neck Cleaner Operation: This will operate the cleaner for 15 seconds out of every 6 hours, continuously.

[Cleaner]
 Fallback OFF
 OSC 000/00:15/359:45 Then ON

If you have any questions or issues please contact us at 985-781-9078 or visit our website at www.coralvue.com